

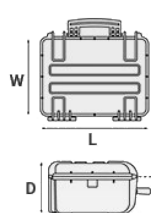
Mod. 7745.B E

7745 – EXPLORER CASES, ULTRALIGHT COPOLYMER POLYPROPYLENE WATERPROOF CASE

Light, water and dust tight cases. Floating and submersible until one meter (certified IP 67). Shipping label holder, two man lift side handles and retractable handle. Self-oiling free running wheels. Only for mod. 7745X.B: AIBOX Ready waterproof case with plastic interior racking, able to contain up to 19 AIBOXES in the 30, 60 or 95 mm. available depths.



METRIC MM-KG-C°



INTERNAL DIMENSIONS

L LENGTH	770 mm
W WIDTH	580 mm
D DEPTH	450 mm
LID	90 mm
BASE	360 mm

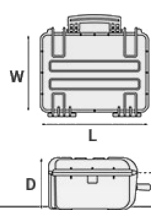
EXTERNAL DIMENSIONS

L LENGTH	836 mm
W WIDTH	641 mm
D DEPTH	489 mm

OTHER DATA

WEIGHT EMPTY	15.50 Kg
WEIGHT WITH FOAM	19.80 Kg
WEIGHT WITH CUSTOM FOAM	Kg
VOLUME	200 lt
BUOYANCY	144 Kg/max
OPERATING TEMPERATURE	°C min -33 / max +90

IMPERIAL IN-LBS-F°



INTERNAL DIMENSIONS

L LENGTH	30 5/16 in
W WIDTH	22 13/16 in
D DEPTH	17 11/16 in
LID	3 9/16 in
BASE	14 3/16 in

EXTERNAL DIMENSIONS

L LENGTH	32 15/16 in
W WIDTH	25 1/4 in
D DEPTH	19 1/4 in

OTHER DATA

WEIGHT EMPTY	34.17 lbs
WEIGHT WITH FOAM	43.65 lbs
WEIGHT WITH CUSTOM FOAM	lbs
VOLUME	52.83 gal
BUOYANCY	317.47 lbs/max

OPERATING
TEMPERATURE

°F min -27.4 / max
+194

FEATURES



AUTOMATIC VALVE

Automatic pressure release valve.



SELF OILING FREE RUNNING WHEELS



TWO MAN LIFT SIDE HANDLES



STAINLESS STEEL REINFORCED PADLOCKABLE POINTS

4 stainless steel clip-covers on the two frontal outer padlock points, to grant a better resistance to abrasion.



ABILITY TO STACK

The special design of the bottom and the lid feet, grants a perfect stackability.



SHIPPING LABEL HOLDER (7745)

Polycarbonate removable label

ACCESSORIES

CONVOLUTED FOAM SET FOR CASE 7726 AND 7745

LIDFOAM.77
(includes 2 pcs.)



FOAM SET FOR CASE 7745

FOAM.7745

Layers of pre cubed foam for the bottom and convoluted foam for the lid. The pre-cubed foam allows the user to tailor the insert to their own individual requirement. The convoluted foam in the lid helps to firmly keep the stored equipment when the case is closed. Available for 7745 model. Color: dark grey. [DOWNLOAD PDF](#)



PROTECTIVE SLEEVE FOR PC 15"-15.6"

TOP ENVELOPE 15

Protective padded notebook sleeve. Protects the laptop from shocks and scratches.



PROTECTIVE SLEEVE FOR PC 13"-13.3"

TOP ENVELOPE 13

Protective padded notebook sleeve. Protects the laptop from shocks and scratches.





LID PANEL WITH ORGANIZED POUCHES

PANEXPL77

Practical and robust lid panel with pouches, ideal for small accessories and documents. Suitable for cases 7726 and 7745. Color: black.



PADDED DIVIDER FOR DRONE FOR 7745

DRN77

Padded divider for drone



OPTIONAL
TOP COVERS
AVAILABLE
FOR LARGER
MODELS

COPERCHI
OPZIONALI
PER I
MODELLI
PIU' GRANDI

TOP COVER FOR DIV77 AND DIV7745

COV77

Top covers available for larger models: they can be easily fixed on the dividers by Velcro strips. Ideal to protect and keep items in place.



PADDED DIVIDER FOR 7745

DIV7745

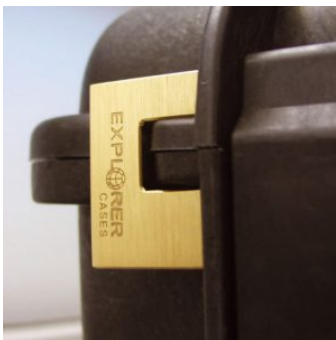
Padded dividers with internal adjustable partitions. Ideal to protect and transport any kind of sensitive equipment. Thanks to their modularity, they can be easily combined.



PADDED DIVIDER FOR 7726-7745

DIV77

Padded dividers with internal adjustable partitions. Ideal to protect and transport any kind of sensitive equipment. Thanks to their modularity, they can be easily combined.



PATENTED HEAVY DUTY BRASS PADLOCK WITH KEYS

EXPL PADLOCK

Designed to fit snug to the Explorer case mould so as not to swing out



PATENTED COMBINATION PADLOCK

EXPL COMBILOCK

Designed to fit snug to the Explorer case mould so as not to swing out



BLIND INSERT

KIT.EXPL.PLUGS

Kit includes 6 pcs. Whenever the slots are not going to be used for in-built applications, those can be closed by blind inserts that will give the case a better and finished interior look.



TSA APPROVED PADLOCK WITH COMBINATION

EXPL TSA.DIGILOCK

The new TSA approved padlocks allow tsa® airport security agents to open the case without destroying the lock. TSA agents are trained to recognize the travel sentry certified logo and should not break the case lock.



METAL BRACKET - KIT SUPP. EXPL

KIT SUPP.EXPL.

KIT SUPP. EXPL - Kit includes 6 pcs. All models (except for the 1908) are internally equipped with specific slots, to apply the optional metal or plastic brackets which provide either a panel's fixing points or a fix mechanical joint inside the case, to build more complete applications. This way the case becomes a real workstation, rather than just a carrying container. As the panel mounting brackets are mechanically fixed by screws, they can be removed when necessary. The dedicated screws allow the case to remain waterproof, and help the panels to be removed easily and quickly



PLASTIC BRACKET

KIT SUPP.PLAST.

Kit includes 6 pcs. All models (except for the 1908) are internally equipped with specific slots, to apply the optional metal or plastic brackets which provide either a panel's fixing points or a fix mechanical joint inside the case, to build more complete applications. This way the case becomes a real workstation, rather than just a carrying container. As the panel mounting brackets are mechanically fixed by screws, they can be removed when necessary. The dedicated screws allow the case to remain waterproof, and help the panels to be removed easily and quickly

SPARE PARTS



Metal clips for mod.

**3005-4209-16-4412-19-4820-5140-5218-21-5325-26-5822-23-33-762
6-30-35-41-7726-45-7814-9413-33-10826-40-11413-13513-27-15416**

KIN.1214

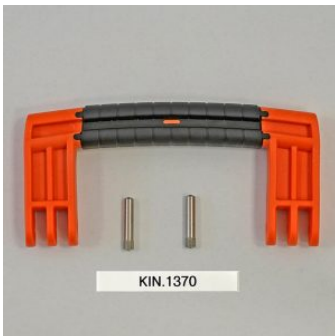
Includes: 4 metal reinforcements



Polyurethane o-ring seal for models 7726 and 7745

KIN.1388

Includes: 1 o-ring



Side handle for mod.

5822-5823-5833-7626-7630-7635-7641-7726-7745-13513-13527

KIN.1370

Includes: 1 orange handle 2 fixing pins



Side handle for mod.

5822-5823-5833-7626-7630-7635-7641-7726-7745-13513-13527

KIN.1368

Includes: 1 military green handle 2 fixing pins



Side handle for mod.

5822-5823-5833-7626-7630-7635-7641-7726-7745-13513-13527

KIN.1366

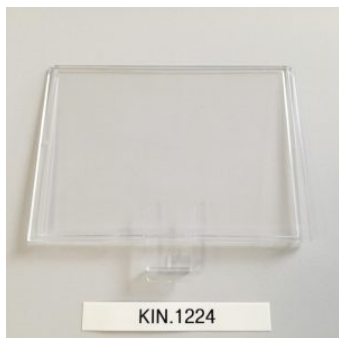
Includes: 1 desert tan handle 2 fixing pins



Side handle for mod. 5131-7626HL-7635HL-7814HL

KIN.1364

Includes: 1 black handle 2 fixing pins



transparent polycarbonate shipping label holders for mod.

5218-5221-7626-7635-7726-7745-9433

KIN.1224

Includes: 1 transparent label holder



Transparent PC name tag for mod.

4209-4216-4412-4419-4820-5218-5221-5325-5326-5822-5823-5833-7626-7630-7635-7641-7726-7745-7814-9413-9433-10826-10840-11413-13513-13527-15416-MUB65

KIN.0969

Includes: 1 transparent name tag holder



Handle for mod.

7630-7726-7745-11413-13513-13527-15416-10826-10840-MUB78

KIN.0425

Includes: 1 black handle 2 fixing pins



Handle for mod.

7630-7726-7745-11413-13513-13527-15416-10826-10840-MUB78

KIN.0881

Includes: 1 sand handle 2 fixing pins



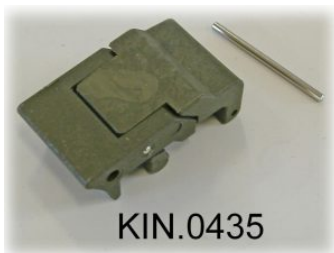
Easy-opening latch for models from 3818 up

KIN.0446

Includes:

1 black latch

1 fixing pin



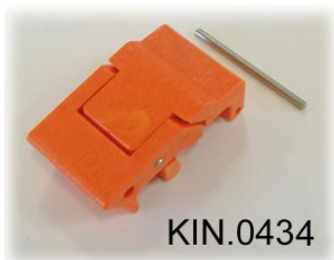
Easy-opening latch for models from 3818 up

KIN.0435

Includes:

1 military green latch

1 fixing pin



Easy-opening latch for models from 3818 up

KIN.0434

Includes:

1 orange latch

1 fixing pin



Wheels for models 5326-5823-5833-7630-7641-7726-7745

KIN.0522

Includes: 2 self-oiling wheels 4 metal washers 2 snap rings (Seeger) 2 fixing pins



Side handle for models 7641-7726-7745

KIN.0411

Includes: 1 orange handle 2 fixing pins



Side handle for mod. 7641-7726-7745

KIN.0422

Includes: 1 black handle 2 fixing pins



Side handle for mod. 7641-7726-7745

KIN.0421

Includes: 1 military green handle 2 fixing pins



Handle for models

7630-7726-7745-11413-13513-13527-10826-10840-15416-MUB78

KIN.0424

Includes: 1 military green handle 2 fixing pins



Easy-opening latch for models from 3818 up

KIN.0883

Includes:

1 sand latch

1 fixing pin



Handle for models

7630-7726-7745-11413-13513-13527-10826-10840-15416-MUB78

KIN.0423

Includes: 1 orange handle 2 fixing pins

