

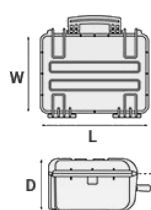
Mod. 7630.B

COPOLYMER POLYPROPYLENE WATERPROOF CASE

Large cases IP67 certified. Two man lift side handles and retractable handle. Self-oiling free running wheels. Three colors available and two internal standard configurations.



METRIC MM-KG-C°



INTERNAL DIMENSIONS

L LENGTH	765 mm
W WIDTH	485 mm
D DEPTH	305 mm
LID	60 mm
BASE	245 mm

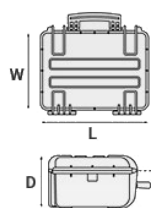
EXTERNAL DIMENSIONS

L LENGTH	860 mm
W WIDTH	560 mm
D DEPTH	355 mm

OTHER DATA

WEIGHT EMPTY	13.56 Kg
WEIGHT WITH FOAM	16.39 Kg
WEIGHT WITH CUSTOM FOAM	Kg
VOLUME	113.10 lt
BUOYANCY	81.80 Kg/max
OPERATING TEMPERATURE	°C min -33 / max +90

IMPERIAL IN-LBS-F°



INTERNAL DIMENSIONS

L LENGTH	30 1/8 in
W WIDTH	19 1/8 in
D DEPTH	12 in
LID	2 3/8 in
BASE	9 5/8 in

EXTERNAL DIMENSIONS

L LENGTH	33 7/8 in
W WIDTH	22 1/16 in
D DEPTH	14 in

OTHER DATA

WEIGHT EMPTY	29.89 lbs
WEIGHT WITH FOAM	36.13 lbs
WEIGHT WITH CUSTOM FOAM	lbs
VOLUME	29.85 gal
BUOYANCY	180.33 lbs/max
OPERATING TEMPERATURE	°F min -27.4 / max +194

FEATURES



SELF OILING FREE RUNNING WHEELS



CORROSION PROOF METAL HINGES WITH LID STAY FEATURES



INTERNAL SLOTS

Internal slots for optional panel mounting brackets or panel mounting rings



LARGE FRONT HANDLE



JAM FREE LATCHES WITH EASY-OPENING MECHANISM

(from model 3818 on)



SEALING O-RING

(Art. NEOSEAL + nr. art.)



MANUAL PRESSURE RELEASE VALVE

The internal stop ring prevents valve from being completely extracted (Art. PURGEVALVE.B)



PVC WATERPROOF I. D. REMOVABLE LABEL

(Art. LABELCOVER + nr. art.)

RETRACTABLE HANDLE



TWO MAN LIFT SIDE HANDLES



ACCESSORIES



PROTECTIVE SLEEVE FOR PC 15"-15.6"

TOP ENVELOPE 15

Protective padded notebook sleeve. Protects the laptop from shocks and scratches.



PROTECTIVE SLEEVE FOR PC 13"-13.3"

TOP ENVELOPE 13

Protective padded notebook sleeve. Protects the laptop from shocks and scratches.



PADDED GUN BAG FOR CASES 7630-7641 AND 7814

GBAG 76

Padded gunbag to protect SMG guns. Inclusive of a number of features to secure rifles and shotguns together with necessary accessories and ammunitions. GBAG 76 is designed to perfectly fit into Explorer Cases models 7630 (up to 6 pieces) 7641 (up to 8 pieces) and 7814 (1 piece). The gunbag is built with durable, 600D tear resistant polyester and robust zipper with lockable Velcro pull zipper. Designed to protect and transport critical gear. This gun bag comes with a removable shoulder strap. Personal ID window on the backside and front removable hook-and-loop screen-printable band.



TOP COVER FOR DIV4820-DIV7630 AND DIV7641

COV48-76

Top covers available for larger models: they can be easily fixed on the dividers by Velcro strips. Ideal to protect and keep items in place.

PADDED DIVIDER FOR 7630

DIV7630

Padded dividers with internal adjustable partitions. Ideal to protect and transport any kind of sensitive equipment. Thanks to their modularity, they can be easily combined.



PADDED BAG WITH ADJUSTABLE DIVIDERS

BAG-L

Highly durable padded bag with rubber coated handle and waterproof zipper with lockable Velcro pull zipper. Removable shoulder strap and rubber feet on the bottom to grant better grip. Internal adjustable padded dividers for flexible configuration. Ideal to protect sensitive equipment (ie electronic, photographic, broadcasting, medical etc.). Suitable for case 7630. Color: black/red.



PADDED BAG WITH ADJUSTABLE DIVIDERS

BAG-M

Highly durable padded bag with rubber coated handle and waterproof zipper. Rubber feet on the bottom to grant better grip. Internal adjustable padded dividers for flexible configuration. Ideal to protect sensitive equipment (ie electronic, photographic, broadcasting, medical etc.). Suitable for case 7630. Color: black/red.

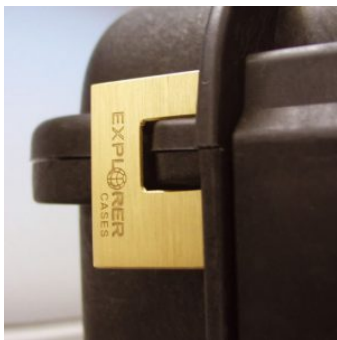


LID PANEL WITH ORGANIZED POUCHES

PANEXPL76

Practical and robust lid panel with pouches, ideal for small accessories and documents. Suitable for cases 7630 and 7641. Color: black.





PATENTED HEAVY DUTY BRASS PADLOCK WITH KEYS

EXPL PADLOCK

Designed to fit snug to the Explorer case mould so as not to swing out



PATENTED COMBINATION PADLOCK

EXPL COMBILOCK

Designed to fit snug to the Explorer case mould so as not to swing out



BLIND INSERT

KIT.EXPL.PLUGS

Kit includes 6 pcs. Whenever the slots are not going to be used for in-built applications, those can be closed by blind inserts that will give the case a better and finished interior look.



TSA APPROVED PADLOCK WITH COMBINATION

EXPL TSA.DIGILOCK

The new TSA approved padlocks allow tsa® airport security agents to open the case without destroying the lock. TSA agents are trained to recognize the travel sentry certified logo and should not break the case lock.



METAL BRACKET - KIT SUPP. EXPL

KIT SUPP.EXPL.

KIT SUPP. EXPL - Kit includes 6 pcs. All models (except for the 1908) are internally equipped with specific slots, to apply the optional metal or plastic brackets which provide either a panel's fixing points or a fix mechanical joint inside the case, to build more complete applications. This way the case becomes a real workstation, rather than just a carrying container. As the panel mounting brackets are mechanically fixed by screws, they can be removed when necessary. The dedicated screws allow the case to remain waterproof, and help the panels to be removed easily and quickly



CONVOLUTED FOAM SET FOR CASE 7630 AND 7641

LIDFOAM.76

(includes 2 pcs.)



PLASTIC BRACKET

KIT SUPP.PLAST.

Kit includes 6 pcs. All models (except for the 1908) are internally equipped with specific slots, to apply the optional metal or plastic brackets which provide either a panel's fixing points or a fix mechanical joint inside the case, to build more complete applications. This way the case becomes a real workstation, rather than just a carrying container. As the panel mounting brackets are mechanically fixed by screws, they can be removed when necessary. The dedicated screws allow the case to remain waterproof, and help the panels to be removed easily and quickly



FOAM SET FOR CASE 7630

FOAM.7630

Layers of pre cubed foam for the bottom and convoluted foam for the lid. The pre-cubed foam allows the user to tailor the insert to their own individual requirement. The convoluted foam in the lid helps to firmly keep the stored equipment when the case is closed. Available for 7630 model. Color: dark grey. [DOWNLOAD PDF](#)

SPARE PARTS



Metal clips for mod.

**3005-4209-16-4412-19-4820-5140-5218-21-5325-26-5822-23-33-762
6-30-35-41-7726-45-7814-9413-33-10826-40-11413-13513-27-15416**

KIN.1214

Includes: 4 metal reinforcements



Side handle for mod.

5822-5823-5833-7626-7630-7635-7641-7726-7745-13513-13527

KIN.1370

Includes: 1 orange handle 2 fixing pins



Side handle for mod.

5822-5823-5833-7626-7630-7635-7641-7726-7745-13513-13527

KIN.1368

Includes: 1 military green handle 2 fixing pins

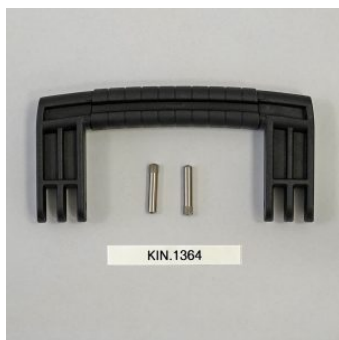


Side handle for mod.

5822-5823-5833-7626-7630-7635-7641-7726-7745-13513-13527

KIN.1366

Includes: 1 desert tan handle 2 fixing pins



Side handle for mod. 5131-7626HL-7635HL-7814HL

KIN.1364

Includes: 1 black handle 2 fixing pins



KIN.0969

Transparent PC name tag for mod.

**4209-4216-4412-4419-4820-5218-5221-5325-5326-5822-5823-5833-
7626-7630-7635-7641-7726-7745-7814-9413-9433-10826-10840-114
13-13513-13527-15416-MUB65**

KIN.0969

Includes: 1 transparent name tag holder



Side handle for models

5325-5326-5822-5823-5833-7630-7814-13513-13527-15416

KIN.0426

Includes: 1 orange handle 2 fixing pins



Side handle for models

5325-5326-5822-5823-5833-7630-7814-13513-13527-15416

KIN.0880

Includes: 1 sand handle 2 fixing pins



Side handle for models

5325-5326-5822-5823-5833-7630-7814-13513-13527-15416

KIN.0412

Includes: 1 black handle 2 fixing pins



Handle for mod.

7630-7726-7745-11413-13513-13527-15416-10826-10840-MUB78

KIN.0425

Includes: 1 black handle 2 fixing pins



Handle for mod.

7630-7726-7745-11413-13513-13527-15416-10826-10840-MUB78

KIN.0881

Includes: 1 sand handle 2 fixing pins



Easy-opening latch for models from 3818 up

KIN.0446

Includes:

1 black latch

1 fixing pin

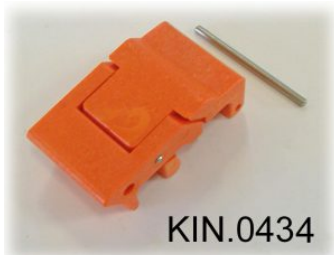


Easy-opening latch for models from 3818 up

KIN.0435

Includes:

- 1 military green latch
- 1 fixing pin



Easy-opening latch for models from 3818 up

KIN.0434

Includes:

- 1 orange latch
- 1 fixing pin



Wheels for models 5326-5823-5833-7630-7641-7726-7745

KIN.0522

Includes: 2 self-oiling wheels 4 metal washers 2 snap rings (Seeger) 2 fixing pins



Polyurethane o-ring seal for models 7630-7641

KIN.0854

Includes: 1 o-ring



Side handle for models

5325-5326-5822-5823-5833-7630-7814-13513-13527-15416

KIN.0448

Includes: 1 military green handle 2 fixing pins



Extractable handle + wheels for models 7630-7641

KIN.0837

Includes: 1 black extractable handle 1 black protective cover 1 metal spring 1 lock/unlock lever 1 small cover cap 4 fixing pins 4 metal washers 4 snap rings (Seeger) 2 self-oiling wheels 12 fixing screws



Handle for models

7630-7726-7745-11413-13513-13527-10826-10840-15416-MUB78

KIN.0424

Includes: 1 military green handle 2 fixing pins



Extractable handle for mod. 7630 (previous version) and MUB78

KIN.0415

Includes: 1 black handle 2 fixing pins 2 torsion springs



Easy-opening latch for models from 3818 up

KIN.0883

Includes:
1 sand latch
1 fixing pin



Manual pressure release valve for models from 2712 up (except mod. 3005)

KIN.0495

Includes: 1 black purge valve (+ o-ring + pin) 1 threaded bush 1 snap ring (Seeger)



Handle for models

7630-7726-7745-11413-13513-13527-10826-10840-15416-MUB78

KIN.0423

Includes: 1 orange handle 2 fixing pins