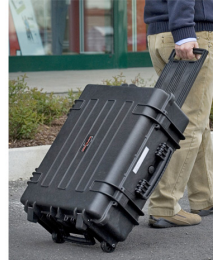


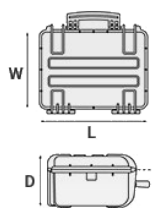
## Mod. 5823.BPH

### WATERPROOF CASE WITH PADDED DIVIDERS

Water resistant trolley cases for professionals. They come with two padded dividers and egg foam insert in the lid. The ideal solution for high-quality photo devices.



METRIC MM-KG-C°



#### INTERNAL DIMENSIONS

<b>L LENGTH</b>	580 mm
<b>W WIDTH</b>	440 mm
<b>D DEPTH</b>	220 mm
<b>LID</b>	60 mm
<b>BASE</b>	160 mm

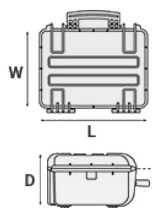
#### EXTERNAL DIMENSIONS

<b>L LENGTH</b>	670 mm
<b>W WIDTH</b>	510 mm
<b>D DEPTH</b>	262 mm

#### OTHER DATA

<b>WEIGHT EMPTY</b>	9,17 Kg
<b>WEIGHT WITH FOAM</b>	10,40 Kg
<b>WEIGHT WITH CUSTOM FOAM</b>	Kg
<b>VOLUME</b>	56 lt
<b>BUOYANCY</b>	36,70 Kg/max
<b>OPERATING TEMPERATURE</b>	°C min +90 / max -33

IMPERIAL IN-LBS-F°



#### INTERNAL DIMENSIONS

<b>L LENGTH</b>	22 13/16 in
<b>W WIDTH</b>	17 5/16 in
<b>D DEPTH</b>	8 11/16 in
<b>LID</b>	2 3/8 in
<b>BASE</b>	6 5/16 in

#### EXTERNAL DIMENSIONS

<b>L LENGTH</b>	26 3/8 in
<b>W WIDTH</b>	20 1/16 in
<b>D DEPTH</b>	10 5/16 in

#### OTHER DATA

<b>WEIGHT EMPTY</b>	20.21 lbs
<b>WEIGHT WITH FOAM</b>	22.92 lbs
<b>WEIGHT WITH CUSTOM FOAM</b>	lbs
<b>VOLUME</b>	14.79 gal
<b>BUOYANCY</b>	80.90 lbs/max
<b>OPERATING TEMPERATURE</b>	°F min +194 / max -27.4

## FEATURES



**SELF OILING FREE RUNNING WHEELS**



**WHEELS AND TELESCOPIC HANDLE (model 5823)**



**CORROSION PROOF METAL HINGES WITH LID STAY FEATURES**



**INTERNAL SLOTS**

Internal slots for optional panel mounting brackets or panel mounting rings



### JAM FREE LATCHES WITH EASY-OPENING MECHANISM

(from model 3818 on)



### SEALING O-RING

(Art. NEOSEAL + nr. art.)



### MANUAL PRESSURE RELEASE VALVE

The internal stop ring prevents valve from being completely extracted (Art. PURGEVALVE.B)



### PVC WATERPROOF I. D. REMOVABLE LABEL

(Art. LABELCOVER + nr. art.)

### **SOFT GRIP RUBBER HANDLE**

Load tested handle, reinforced with corrosion proof steel pins



### **TWO MAN LIFT SIDE HANDLES**



## ACCESSORIES



### PADDED BAG WITH ADJUSTABLE DIVIDERS

BAG-G

Highly durable padded bag with rubber coated handle and waterproof zipper with lockable Velcro pull zipper. Practical external front pouch for documents, removable shoulder strap and rubber feet on the bottom to grant better grip. Internal adjustable padded dividers for flexible configuration. Ideal to protect sensitive equipment (ie electronic, photographic, broadcasting, medical etc.). Suitable for cases 5822, 5823 and 5833. Color: black/red.



### LID PANEL WITH ORGANIZED POUCHES

PANEXPL58

Practical and robust lid panel with pouches, ideal for small accessories and documents. Suitable for cases 5822, 5823 and 5833. Color: black.

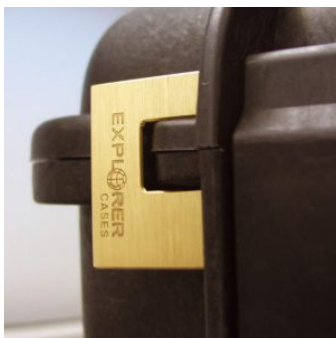


FIXING  
KIT  
INCLUDED

### CONVOLUTED FOAM SET FOR CASE 5822, 5823 AND 5833

LIDFOAM.58

(includes 2 pcs.)



### PATENTED HEAVY DUTY BRASS PADLOCK WITH KEYS

EXPL PADLOCK

Designed to fit snug to the Explorer case mould so as not to swing out



### PATENTED COMBINATION PADLOCK

EXPL COMBILOCK

Designed to fit snug to the Explorer case mould so as not to swing out



### BLIND INSERT

KIT.EXPL.PLUGS

Kit includes 6 pcs. Whenever the slots are not going to be used for in-built applications, those can be closed by blind inserts that will give the case a better and finished interior look.



### TSA APPROVED PADLOCK WITH COMBINATION

EXPL TSA.DIGILOCK

The new TSA approved padlocks allow tsa® airport security agents to open the case without destroying the lock. TSA agents are trained to recognize the travel sentry certified logo and should not break the case lock.



### METAL BRACKET - KIT SUPP. EXPL

KIT SUPP.EXPL.

KIT SUPP. EXPL - Kit includes 6 pcs. All models (except for the 1908) are internally equipped with specific slots, to apply the optional metal or plastic brackets which provide either a panel's fixing points or a fix mechanical joint inside the case, to build more complete applications. This way the case becomes a real workstation, rather than just a carrying container. As the panel mounting brackets are mechanically fixed by screws, they can be removed when necessary. The dedicated screws allow the case to remain waterproof, and help the panels to be removed easily and quickly





### PLASTIC BRACKET

KIT SUPP.PLAST.

Kit includes 6 pcs. All models (except for the 1908) are internally equipped with specific slots, to apply the optional metal or plastic brackets which provide either a panel's fixing points or a fix mechanical joint inside the case, to build more complete applications. This way the case becomes a real workstation, rather than just a carrying container. As the panel mounting brackets are mechanically fixed by screws, they can be removed when necessary. The dedicated screws allow the case to remain waterproof, and help the panels to be removed easily and quickly



### FOAM SET FOR CASE 5822 AND 5823

FOAM.5822

Layers of pre cubed foam for the bottom and convoluted foam for the lid. The pre-cubed foam allows the user to tailor the insert to their own individual requirement. The convoluted foam in the lid helps to firmly keep the stored equipment when the case is closed. Available for models 5822 and 5823. Color: dark grey. [DOWNLOAD PDF](#)

## SPARE PARTS

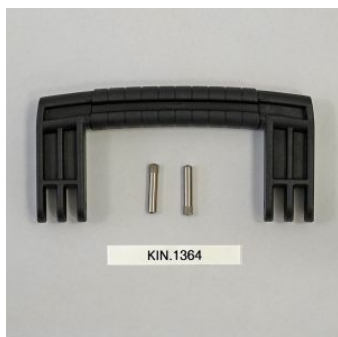


### **Metal clips for mod.**

**3005-4209-16-4412-19-4820-5140-5218-21-5325-26-5822-23-33-762  
6-30-35-41-7726-45-7814-9413-33-10826-40-11413-13513-27-15416**

KIN.1214

Includes: 4 metal reinforcements



### **Side handle for mod. 5131-7626HL-7635HL-7814HL**

KIN.1364

Includes: 1 black handle 2 fixing pins



### **Transparent PC name tag for mod.**

**4209-4216-4412-4419-4820-5218-5221-5325-5326-5822-5823-5833-  
7626-7630-7635-7641-7726-7745-7814-9413-9433-10826-10840-114  
13-13513-13527-15416-MUB65**

KIN.0969

Includes: 1 transparent name tag holder



### **Side handle for models**

**5325-5326-5822-5823-5833-7630-7814-13513-13527-15416**

KIN.0412

Includes: 1 black handle 2 fixing pins





**Rubber coated handle for models 4820-5325-5326-5822-5823-5833**

KIN.0542

Includes: 1 black handle 2 fixing pins



**Name tag holder for mod. 2712-2717-3317-3317W-3818-5117-5122-MUB78**

KIN.0496

Includes: 1 transparent name tag holder



**Easy-opening latch for models from 3818 up**

KIN.0446

Includes:  
1 black latch  
1 fixing pin



**Wheels for models 5326-5823-5833-7630-7641-7726-7745**

KIN.0522

Includes: 2 self-oiling wheels 4 metal washers 2 snap rings (Seeger) 2 fixing pins

**Feet for models 5326 and 5823**

KIN.0526

Includes:  
2 black feet  
2 fixing pins  
2 metal washers  
2 snap rings (Seeger)

**Extractable handle + wheels for models 5822-5823-5833**

KIN.0550

Includes: 1 black extractable handle 1 black protective cover 1 metal spring 1 lock/unlock lever 1 small cover cap 4 fixing pins 4 metal washers 4 snap rings (Seeger) 2 self-oiling wheels 12 fixing screws

**Polyurethane o-ring seal for models 5822-5823-5833**

KIN.0853

Includes: 1 o-ring

**Manual pressure release valve for models from 2712 up (except mod. 3005)**

KIN.0495

Includes: 1 black purge valve (+ o-ring + pin) 1 threaded bush 1 snap ring (Seeger)



**EPDM extruded o-ring seal for models 5822, 5823 and 5833**

KIN.0530

Includes:  
1 o-ring