

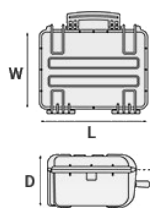
Mod. 5823.B E

COPOLYMER POLYPROPYLENE WATERPROOF CASE

Watertight cases offer absolute protection in the harshest environment for all kinds of sensitive instrumentation. Practical side handles and padlockable points.



METRIC MM-KG-C°



INTERNAL DIMENSIONS

L LENGTH	580 mm
W WIDTH	440 mm
D DEPTH	220 mm
LID	60 mm
BASE	160 mm

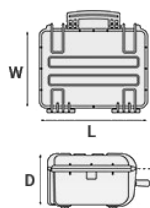
EXTERNAL DIMENSIONS

L LENGTH	670 mm
W WIDTH	510 mm
D DEPTH	262 mm

OTHER DATA

WEIGHT EMPTY	9.17 Kg
WEIGHT WITH FOAM	10.40 Kg
WEIGHT WITH CUSTOM FOAM	Kg
VOLUME	56.10 lt
BUOYANCY	36.70 Kg/max
OPERATING TEMPERATURE	°C min -33 / max +90

IMPERIAL IN-LBS-F°



INTERNAL DIMENSIONS

L LENGTH	22 13/16 in
W WIDTH	17 5/16 in
D DEPTH	8 11/16 in
LID	2 3/8 in
BASE	6 5/16 in

EXTERNAL DIMENSIONS

L LENGTH	26 3/8 in
W WIDTH	20 1/16 in
D DEPTH	10 5/16 in

OTHER DATA

WEIGHT EMPTY	20.21 lbs
WEIGHT WITH FOAM	22.92 lbs
WEIGHT WITH CUSTOM FOAM	lbs
VOLUME	14.79 gal
BUOYANCY	80.90 lbs/max
OPERATING TEMPERATURE	°F min -27.4 / max +194

FEATURES



SELF OILING FREE RUNNING WHEELS



WHEELS AND TELESCOPIC HANDLE (model 5823)



CORROSION PROOF METAL HINGES WITH LID STAY FEATURES



INTERNAL SLOTS

Internal slots for optional panel mounting brackets or panel mounting rings



JAM FREE LATCHES WITH EASY-OPENING MECHANISM

(from model 3818 on)



SEALING O-RING

(Art. NEOSEAL + nr. art.)



MANUAL PRESSURE RELEASE VALVE

The internal stop ring prevents valve from being completely extracted (Art. PURGEVALVE.B)



PVC WATERPROOF I. D. REMOVABLE LABEL

(Art. LABELCOVER + nr. art.)

SOFT GRIP RUBBER HANDLE

Load tested handle, reinforced with corrosion proof steel pins



TWO MAN LIFT SIDE HANDLES



ACCESSORIES



PROTECTIVE SLEEVE FOR PC 15"-15.6"

TOP ENVELOPE 15

Protective padded notebook sleeve. Protects the laptop from shocks and scratches.



PROTECTIVE SLEEVE FOR PC 13"-13.3"

TOP ENVELOPE 13

Protective padded notebook sleeve. Protects the laptop from shocks and scratches.



OPTIONAL
TOP COVERS
AVAILABLE
FOR LARGER
MODELS

COPERCHI
OPZIONALI
PER I
MODELLI
PIU' GRANDI



TOP COVER FOR DIV58-DIV58.1 AND DIV58.2

COV58

Top covers available for larger models: they can be easily fixed on the dividers by Velcro strips. Ideal to protect and keep items in place.



PADDED DIVIDER FOR 5822-5823-5833

DIV58

Padded dividers with internal adjustable partitions. Ideal to protect and transport any kind of sensitive equipment. Thanks to their modularity, they can be easily combined.



PADDED BAG WITH ADJUSTABLE DIVIDERS

BAG-G

Highly durable padded bag with rubber coated handle and waterproof zipper with lockable Velcro pull zipper. Practical external front pouch for documents, removable shoulder strap and rubber feet on the bottom to grant better grip. Internal adjustable padded dividers for flexible configuration. Ideal to protect sensitive equipment (ie electronic, photographic, broadcasting, medical etc.). Suitable for cases 5822, 5823 and 5833. Color: black/red.



LID PANEL WITH ORGANIZED POUCHES

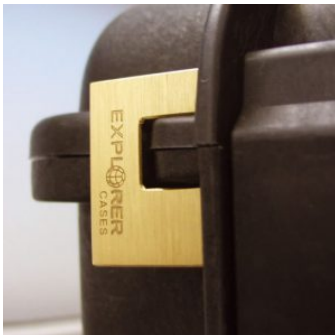
PANEXPL58

Practical and robust lid panel with pouches, ideal for small accessories and documents. Suitable for cases 5822, 5823 and 5833. Color: black.

CONVOLUTED FOAM SET FOR CASE 5822, 5823 AND 5833

LIDFOAM.58

(includes 2 pcs.)



PATENTED HEAVY DUTY BRASS PADLOCK WITH KEYS

EXPL PADLOCK

Designed to fit snug to the Explorer case mould so as not to swing out



PATENTED COMBINATION PADLOCK

EXPL COMBILOCK

Designed to fit snug to the Explorer case mould so as not to swing out



BLIND INSERT

KIT.EXPL.PLUGS

Kit includes 6 pcs. Whenever the slots are not going to be used for in-built applications, those can be closed by blind inserts that will give the case a better and finished interior look.



TSA APPROVED PADLOCK WITH COMBINATION

EXPL TSA.DIGILOCK

The new TSA approved padlocks allow tsa® airport security agents to open the case without destroying the lock. TSA agents are trained to recognize the travel sentry certified logo and should not break the case lock.



METAL BRACKET - KIT SUPP. EXPL

KIT SUPP.EXPL.

KIT SUPP. EXPL - Kit includes 6 pcs. All models (except for the 1908) are internally equipped with specific slots, to apply the optional metal or plastic brackets which provide either a panel's fixing points or a fix mechanical joint inside the case, to build more complete applications. This way the case becomes a real workstation, rather than just a carrying container. As the panel mounting brackets are mechanically fixed by screws, they can be removed when necessary. The dedicated screws allow the case to remain waterproof, and help the panels to be removed easily and quickly



PLASTIC BRACKET

KIT SUPP.PLAST.

Kit includes 6 pcs. All models (except for the 1908) are internally equipped with specific slots, to apply the optional metal or plastic brackets which provide either a panel's fixing points or a fix mechanical joint inside the case, to build more complete applications. This way the case becomes a real workstation, rather than just a carrying container. As the panel mounting brackets are mechanically fixed by screws, they can be removed when necessary. The dedicated screws allow the case to remain waterproof, and help the panels to be removed easily and quickly



FOAM SET FOR CASE 5822 AND 5823

FOAM.5822

Layers of pre cubed foam for the bottom and convoluted foam for the lid. The pre-cubed foam allows the user to tailor the insert to their own individual requirement. The convoluted foam in the lid helps to firmly keep the stored equipment when the case is closed. Available for models 5822 and 5823. Color: dark grey. [DOWNLOAD PDF](#)

SPARE PARTS



Metal clips for mod.

**3005-4209-16-4412-19-4820-5140-5218-21-5325-26-5822-23-33-762
6-30-35-41-7726-45-7814-9413-33-10826-40-11413-13513-27-15416**

KIN.1214

Includes: 4 metal reinforcements



Side handle for mod.

5822-5823-5833-7626-7630-7635-7641-7726-7745-13513-13527

KIN.1370

Includes: 1 orange handle 2 fixing pins



Side handle for mod.

5822-5823-5833-7626-7630-7635-7641-7726-7745-13513-13527

KIN.1368

Includes: 1 military green handle 2 fixing pins



Side handle for mod.

5822-5823-5833-7626-7630-7635-7641-7726-7745-13513-13527

KIN.1366

Includes: 1 desert tan handle 2 fixing pins



Side handle for mod. 5131-7626HL-7635HL-7814HL

KIN.1364

Includes: 1 black handle 2 fixing pins



KIN.0969

Transparent PC name tag for mod.

**4209-4216-4412-4419-4820-5218-5221-5325-5326-5822-5823-5833-
7626-7630-7635-7641-7726-7745-7814-9413-9433-10826-10840-114
13-13513-13527-15416-MUB65**

KIN.0969

Includes: 1 transparent name tag holder



Side handle for models

5325-5326-5822-5823-5833-7630-7814-13513-13527-15416

KIN.0426

Includes: 1 orange handle 2 fixing pins



Side handle for models

5325-5326-5822-5823-5833-7630-7814-13513-13527-15416

KIN.0880

Includes: 1 sand handle 2 fixing pins



Side handle for models

5325-5326-5822-5823-5833-7630-7814-13513-13527-15416

KIN.0412

Includes: 1 black handle 2 fixing pins



Rubber coated handle for models 4820-5325-5326-5822-5823-5833

KIN.0540

Includes: 1 orange handle 2 fixing pins



Rubber coated handle for models 4820-5325-5326-5822-5823-5833

KIN.0542

Includes: 1 black handle 2 fixing pins



Easy-opening latch for models from 3818 up

KIN.0446

Includes:
1 black latch
1 fixing pin



Easy-opening latch for models from 3818 up

KIN.0435

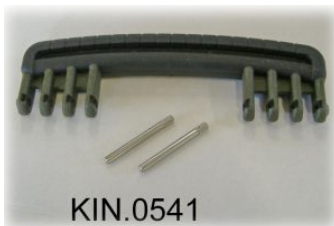
Includes:
1 military green latch
1 fixing pin



Easy-opening latch for models from 3818 up

KIN.0434

Includes:
1 orange latch
1 fixing pin



Rubber coated handle for models 4820-5325-5326-5822-5823-5833

KIN.0541

Includes: 1 military green handle 2 fixing pins



Wheels for models 5326-5823-5833-7630-7641-7726-7745

KIN.0522

Includes: 2 self-oiling wheels 4 metal washers 2 snap rings (Seeger) 2 fixing pins



Side handle for models

5325-5326-5822-5823-5833-7630-7814-13513-13527-15416

KIN.0448

Includes: 1 military green handle 2 fixing pins



Feet for models 5326 and 5823

KIN.0526

Includes:

2 black feet

2 fixing pins

2 metal washers

2 snap rings (Seeger)



Extractable handle + wheels for models 5822-5823-5833

KIN.0550

Includes: 1 black extractable handle 1 black protective cover 1 metal spring 1 lock/unlock lever 1 small cover cap 4 fixing pins 4 metal washers 4 snap rings (Seeger) 2 self-oiling wheels 12 fixing screws



Polyurethane o-ring seal for models 5822-5823-5833

KIN.0853

Includes: 1 o-ring



Easy-opening latch for models from 3818 up

KIN.0883

Includes:

1 sand latch

1 fixing pin



Manual pressure release valve for models from 2712 up (except mod. 3005)

KIN.0495

Includes: 1 black purge valve (+ o-ring + pin) 1 threaded bush 1 snap ring (Seeger)