

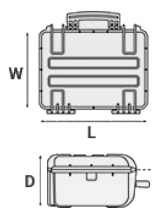
Mod. 5221HL.B

5221HL – EXPLORER CASES, ULTRALIGHT COPOLYMER POLYPROPYLENE WATERPROOF CASE

Heavy duty cases with wheels with ball bearings and telescopic handle. Sealing o-ring and removable lid. Available empty or with layers of pre-cubed foam in the bottom and convoluted foam in the lid.



METRIC MM-KG-C°



INTERNAL DIMENSIONS

L LENGTH	520 mm
W WIDTH	285 mm
D DEPTH	205 mm
LID	55 mm
BASE	150 mm

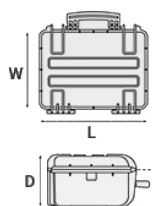
EXTERNAL DIMENSIONS

L LENGTH	550 mm
W WIDTH	350 mm
D DEPTH	225 mm

OTHER DATA

WEIGHT EMPTY	3.90 Kg
WEIGHT WITH FOAM	4.50 Kg
WEIGHT WITH CUSTOM FOAM	Kg
VOLUME	30.3 lt
BUOYANCY	20 Kg/max
OPERATING TEMPERATURE	°C min -33 / max +90

IMPERIAL IN-LBS-F°



INTERNAL DIMENSIONS

L LENGTH	20 1/2 in
W WIDTH	11 1/4 in
D DEPTH	8 1/16 in
LID	2 3/16 in
BASE	5 7/8 in

EXTERNAL DIMENSIONS

L LENGTH	21 5/8 in
W WIDTH	13 3/4 in
D DEPTH	8 7/8 in

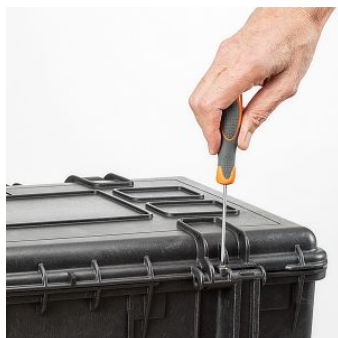
OTHER DATA

WEIGHT EMPTY	8.59 lbs
WEIGHT WITH FOAM	9.92 lbs
WEIGHT WITH CUSTOM FOAM	lbs
VOLUME	8 gal
BUOYANCY	44.09 lbs/max
OPERATING TEMPERATURE	°F min -27.4 / max

TEMPERATURE

+194

FEATURES



LID CAN BE SET SLIDE-OFF

By releasing the back screw, lid becomes set to slide-off when opened at 70°



REINFORCED PADLOCKABLE POINTS

Stainless steel clip-covers, to grant a better resistance to abrasion.



EASY TO OPEN RELEASE TELESCOPIC HANDLE (5218-5221)



PULL RELEASE LATCH

New pull release latch grants additional safety and avoids accidental opening



SHIPPING LABEL HOLDER (OPTIONAL)

Polycarbonate removable label



AUTOMATIC VALVE

Automatic pressure release valve.



SOFT GRIP HANDLE

Load tested handle, reinforced with corrosion proof steel pins



SELF OILING FREE RUNNING WHEELS



INTERNAL SLOTS

Internal slots for optional panel mounting brackets or panel mounting rings



SEALING O-RING

(Art. NEOSEAL + nr. art.)



PVC WATERPROOF I. D. REMOVABLE LABEL

(Art. LABELCOVER + nr. art.)



WRITABLE NAME TAG

PVC waterproof ID removable label

ACCESSORIES



HANDY BACKPACK CARRYING SYSTEM FOR CASES 5218-5221

BACKPACK CABIN

This practical kit adds backpack transportability to the models 5218 and 5221. Generously and ergonomically padded for maximum comfort. Detachable lap belt. Quickly attachable and removable. The backpack harness can be stored inside or outside of the case, in its dedicated handy pouch.



PADDED DIVIDER FOR 5218-5221

DIV52

Padded dividers with internal adjustable partitions. Ideal to protect and transport any kind of sensitive equipment. Thanks to their modularity, they can be easily combined.



LID PANEL WITH ORGANIZED POUCHES

PANEXPL52

Practical and robust lid panel with pouches, ideal for small accessories and documents. Suitable for cases 5218 and 5221. Color: black.



FOAM SET FOR CASE 5221

FOAM.5221

Layers of pre cubed foam for the bottom and convoluted foam for the lid. The pre-cubed foam allows the user to tailor the insert to their own individual requirement. The convoluted foam in the lid helps to firmly keep the stored equipment when the case is closed. Available for 5221 model. Color: dark grey. [DOWNLOAD PDF](#)

CONVOLUTED FOAM SET FOR CASE 5221

LIDFOAM.5221
(includes 2 pcs.)



PROTECTIVE SLEEVE FOR PC 15"-15.6"

TOP ENVELOPE 15
Protective padded notebook sleeve. Protects the laptop from shocks and scratches.



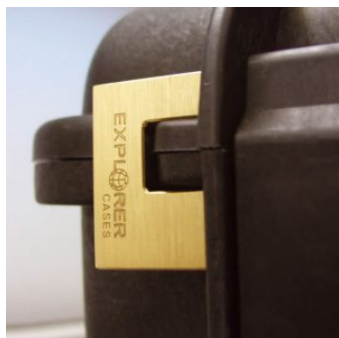
PROTECTIVE SLEEVE FOR PC 13"-13.3"

TOP ENVELOPE 13
Protective padded notebook sleeve. Protects the laptop from shocks and scratches.



PATENTED HEAVY DUTY BRASS PADLOCK WITH KEYS

EXPL PADLOCK
Designed to fit snug to the Explorer case mould so as not to swing out





PATENTED COMBINATION PADLOCK

EXPL COMBILOCK

Designed to fit snug to the Explorer case mould so as not to swing out



BLIND INSERT

KIT.EXPL.PLUGS

Kit includes 6 pcs. Whenever the slots are not going to be used for in-built applications, those can be closed by blind inserts that will give the case a better and finished interior look.



TSA APPROVED PADLOCK WITH COMBINATION

EXPL TSA.DIGILOCK

The new TSA approved padlocks allow tsa® airport security agents to open the case without destroying the lock. TSA agents are trained to recognize the travel sentry certified logo and should not break the case lock.



METAL BRACKET - KIT SUPP. EXPL

KIT SUPP.EXPL.

KIT SUPP. EXPL - Kit includes 6 pcs. All models (except for the 1908) are internally equipped with specific slots, to apply the optional metal or plastic brackets which provide either a panel's fixing points or a fix mechanical joint inside the case, to build more complete applications. This way the case becomes a real workstation, rather than just a carrying container. As the panel mounting brackets are mechanically fixed by screws, they can be removed when necessary. The dedicated screws allow the case to remain waterproof, and help the panels to be removed easily and quickly



PLASTIC BRACKET

KIT SUPP.PLAST.

Kit includes 6 pcs. All models (except for the 1908) are internally equipped with specific slots, to apply the optional metal or plastic brackets which provide either a panel's fixing points or a fix mechanical joint inside the case, to build more complete applications. This way the case becomes a real workstation, rather than just a carrying container. As the panel mounting brackets are mechanically fixed by screws, they can be removed when necessary. The dedicated screws allow the case to remain waterproof, and help the panels to be removed easily and quickly

SPARE PARTS



Metal clips for mod.

**3005-4209-16-4412-19-4820-5140-5218-21-5325-26-5822-23-33-762
6-30-35-41-7726-45-7814-9413-33-10826-40-11413-13513-27-15416**

KIN.1214

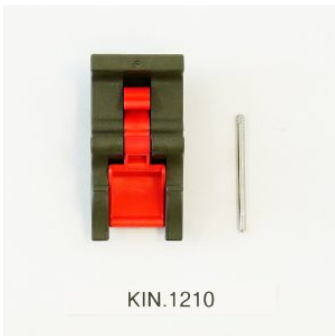
Includes: 4 metal reinforcements



Red trigger pull release latch for models 4209-4216-5218-5221

KIN.1211

Includes: 1 desert tan latch 1 fixing pin



Red trigger pull release latch for models 4209-4216-5218-5221

KIN.1210

Includes: 1 military green latch 1 fixing pin



Rubber coated handle for models 4216-5218-5221

KIN.1255

Includes: 1 orange handle 2 fixing pins



Rubber coated handle for models 4216-5218-5221

KIN.1207

Includes: 1 desert tan handle 2 fixing pins



Rubber coated handle for models 4216-5218-5221

KIN.1206

Includes: 1 military green handle 2 fixing pins



Extractable handle for models 5218-5221

KIN.1204

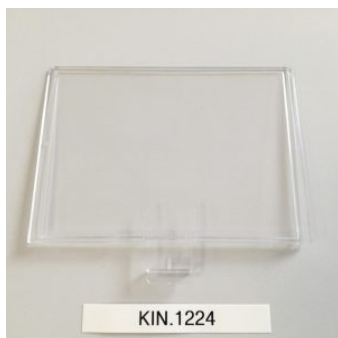
Includes: 1 desert tan extractable handle 10 fixing screws



Extractable handle for models 5218-5221

KIN.1203

Includes: 1 military green extractable handle 10 fixing screws



**transparent polycarbonate shipping label holders for mod.
5218-5221-7626-7635-7726-7745-9433**

KIN.1224

Includes: 1 transparent label holder



Wheels for models 5218-5221

KIN.1216

Includes: 2 wheels with bearings 2 self-locking nuts 1 threaded rod



Red trigger pull release latch for models 4209-4216-5218-5221

KIN.1209

Includes: 1 black latch 1 fixing pin



Rubber coated handle for models 4216-5218-5221

KIN.1205

Includes: 1 black handle 2 fixing pins



Extractable handle for models 5218-5221

KIN.1202

Includes: 1 black extractable handle 10 fixing screws



Polyurethane o-ring seal for models 5218 and 5221

KIN.1201

Includes: 1 o-ring



KIN.0969

Transparent PC name tag for mod.

**4209-4216-4412-4419-4820-5218-5221-5325-5326-5822-5823-5833-
7626-7630-7635-7641-7726-7745-7814-9413-9433-10826-10840-114
13-13513-13527-15416-MUB65**

KIN.0969

Includes: 1 transparent name tag holder



Easy-opening latch for models from 3818 up

KIN.0446

Includes:

1 black latch

1 fixing pin



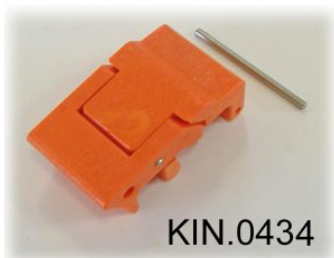
Easy-opening latch for models from 3818 up

KIN.0435

Includes:

1 military green latch

1 fixing pin



Easy-opening latch for models from 3818 up

KIN.0434

Includes:

1 orange latch

1 fixing pin



Easy-opening latch for models from 3818 up

KIN.0883

Includes:

1 sand latch

1 fixing pin