

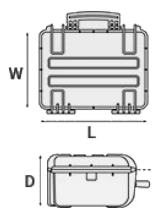
Mod. 5117.B

COPOLYMER POLYPROPYLENE WATERPROOF CASE

Crush-proof medium-size cases with reinforced corners and ergonomic rubber handle. Lid can be set to slide off. Manual pressure release valve.



METRIC MM-KG-C°



INTERNAL DIMENSIONS

L LENGTH	517 mm
W WIDTH	277 mm
D DEPTH	173 mm
LID	50 mm
BASE	123 mm

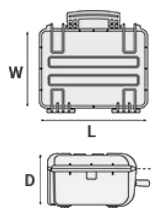
EXTERNAL DIMENSIONS

L LENGTH	546 mm
W WIDTH	347 mm
D DEPTH	197 mm

OTHER DATA

WEIGHT EMPTY	3.80 Kg
WEIGHT WITH FOAM	4.50 Kg
WEIGHT WITH CUSTOM FOAM	Kg
FOAM VOLUME	24.70 lt
BUOYANCY	15.80 Kg/max
OPERATING TEMPERATURE	°C min -33 / max +90

IMPERIAL IN-LBS-F°



INTERNAL DIMENSIONS

L LENGTH	20 3/8 in
W WIDTH	10 7/8 in
D DEPTH	6 13/16 in
LID	1 15/16 in
BASE	4 13/16 in

EXTERNAL DIMENSIONS

L LENGTH	21 1/2 in
W WIDTH	13 11/16 in
D DEPTH	7 3/4 in

OTHER DATA

WEIGHT EMPTY	8.37 lbs
WEIGHT WITH FOAM	9.92 lbs
WEIGHT WITH CUSTOM FOAM	lbs
FOAM VOLUME	6.34 gal
BUOYANCY	34.83 lbs/max
OPERATING TEMPERATURE	°F min -27.4 / max +194

FEATURES

ACCESSORIES



PROTECTIVE SLEEVE FOR PC 15"-15.6"

TOP ENVELOPE 15

Protective padded notebook sleeve. Protects the laptop from shocks and scratches.



PROTECTIVE SLEEVE FOR PC 13"-13.3"

TOP ENVELOPE 13

Protective padded notebook sleeve. Protects the laptop from shocks and scratches.



OPTIONAL
TOP COVERS
AVAILABLE
FOR LARGER
MODELS

COPERCHI
OPZIONALI
PER I
MODELLI
PIU' GRANDI



TOP COVER FOR DIV51

COV51

Top covers available for larger models: they can be easily fixed on the dividers by Velcro strips. Ideal to protect and keep items in place.



PADDED DIVIDER FOR 5117-5122

DIV51

Padded dividers with internal adjustable partitions. Ideal to protect and transport any kind of sensitive equipment. Thanks to their modularity, they can be easily combined.



PANEL RING FOR CASE 5117 AND 5122

PANRING51.USA

Includes Imperial system fixing screws. User friendly panel frames, they can be used to fix several kind of panels, from plastic to aluminum ones. Equipped with an additional gasket (which will be squeezed in between the panel and the frame) they can provide the case with a perfect instrumentation surface and a further humidity and dust resistance when the case is used in the field. Completely removable, resistant and light, these panel rings help to transform the Explorer cases into practical workstations.



LID PANEL WITH ORGANIZED POUCHES

PANEXPL51

Practical and robust lid panel with pouches, ideal for small accessories and documents. Suitable for cases 5117 and 5122. Color: black.



PADDED BAG WITH ADJUSTABLE DIVIDERS

BAG-B

Highly durable padded bag with rubber coated handle and waterproof zipper with lockable Velcro pull zipper. Practical external front pouch for documents, removable shoulder strap and rubber feet on the bottom to grant better grip. Internal adjustable padded dividers for flexible configuration. Ideal to protect sensitive equipment (ie electronic, photographic, broadcasting, medical etc.). Suitable for cases 5117 and 5122. Color: black/red.



PANEL RING FOR CASE 5117 AND 5122

PANRING51

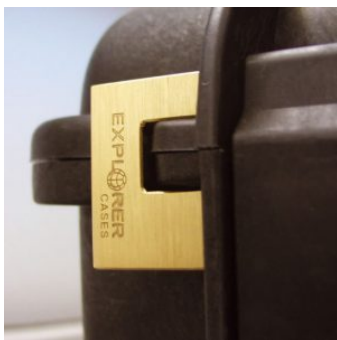
Includes Metric system fixing screws. User friendly panel frames, they can be used to fix several kind of panels, from plastic to aluminum ones. Equipped with an additional gasket (which will be squeezed in between the panel and the frame) they can provide the case with a perfect instrumentation surface and a further humidity and dust resistance when the case is used in the field. Completely removable, resistant and light, these panel rings help to transform the Explorer cases into practical workstations.



ADJUSTABLE SHOULDER KIT

SHOULDERKIT.U

The kit is composed by: shoulder strap with plastic endings, 4 threaded knots, 2 metal plates. (min. extension 106 cm, max. extension 201 cm). The strap comes with the Explorer logo. Suitable for models: 1908, 1913, 2209, 2214, 3005, 4412, 4419, 5117, 9413, 11413 and 13513.



PATENTED HEAVY DUTY BRASS PADLOCK WITH KEYS

EXPL PADLOCK

Designed to fit snug to the Explorer case mould so as not to swing out



PATENTED COMBINATION PADLOCK

EXPL COMBILOCK

Designed to fit snug to the Explorer case mould so as not to swing out



BLIND INSERT

KIT.EXPL.PLUGS

Kit includes 6 pcs. Whenever the slots are not going to be used for in-built applications, those can be closed by blind inserts that will give the case a better and finished interior look.



TSA APPROVED PADLOCK WITH COMBINATION

EXPL TSA.DIGILOCK

The new TSA approved padlocks allow tsa® airport security agents to open the case without destroying the lock. TSA agents are trained to recognize the travel sentry certified logo and should not break the case lock.



METAL BRACKET - KIT SUPP. EXPL

KIT SUPP.EXPL.

KIT SUPP. EXPL - Kit includes 6 pcs. All models (except for the 1908) are internally equipped with specific slots, to apply the optional metal or plastic brackets which provide either a panel's fixing points or a fix mechanical joint inside the case, to build more complete applications. This way the case becomes a real workstation, rather than just a carrying container. As the panel mounting brackets are mechanically fixed by screws, they can be removed when necessary. The dedicated screws allow the case to remain waterproof, and help the panels to be removed easily and quickly



PLASTIC BRACKET

KIT SUPP.PLAST.

Kit includes 6 pcs. All models (except for the 1908) are internally equipped with specific slots, to apply the optional metal or plastic brackets which provide either a panel's fixing points or a fix mechanical joint inside the case, to build more complete applications. This way the case becomes a real workstation, rather than just a carrying container. As the panel mounting brackets are mechanically fixed by screws, they can be removed when necessary. The dedicated screws allow the case to remain waterproof, and help the panels to be removed easily and quickly



FOAM SET FOR CASE 5117

FOAM.5117

Layers of pre cubed foam for the bottom and convoluted foam for the lid. The pre-cubed foam allows the user to tailor the insert to their own individual requirement. The convoluted foam in the lid helps to firmly keep the stored equipment when the case is closed. Available for 5117 model. Color: dark grey. [DOWNLOAD PDF](#)

CONVOLUTED FOAM SET FOR CASE 5117 AND 5122

LIDFOAM.51
(includes 2 pcs.)



HANDY BACKPACK CARRYING SYSTEM FOR CASES

BACKPACK M

Made of robust tear resistant polyester. Designed with adjustable and comfortable padded shoulder straps and belt. Provided with an external pocket for small accessories, with Velcro strap. Ideal wherever a free hand movement is required, like in outdoor activities, extreme sports, emergency, rescue, trekking, industrial field, etc. Suitable for models 3317, 3818 and 5117. Color: black.



SPARE PARTS



Rubber coated handle for mod. 3818-4412-4419-5117-5122

KIN.0479

Includes: 1 black handle 2 fixing pins



Rubber coated handle for models 3818-4412-4419-5117-5122

KIN.0469

Includes: 1 military green handle 2 fixing pins



Polyurethane o-ring seal for models 5117 and 5122

KIN.0852

Includes: 1 o-ring



Name tag holder for mod. 2712-2717-3317-3317W-3818-5117-5122-MUB78

KIN.0496

Includes: 1 transparent name tag holder



Easy-opening latch for models from 3818 up

KIN.0446

Includes:
1 black latch
1 fixing pin



Easy-opening latch for models from 3818 up

KIN.0435

Includes:
1 military green latch
1 fixing pin



Easy-opening latch for models from 3818 up

KIN.0434

Includes:
1 orange latch
1 fixing pin



Rubber coated handle for models 3818-4412-4419-5117-5122

KIN.0468

Includes: 1 orange handle 2 fixing pins



Easy-opening latch for models from 3818 up

KIN.0883

Includes:

1 sand latch

1 fixing pin



Manual pressure release valve for models from 2712 up (except mod. 3005)

KIN.0495

Includes: 1 black purge valve (+ o-ring + pin) 1 threaded bush 1 snap ring (Seeger)