

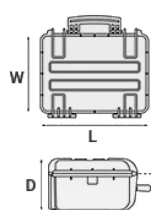
Mod. 4820.BPH

WATERPROOF CASE WITH PADDED DIVIDERS

Impact resistant cases with internal padded camera bags and convoluted foam. Ideal to transport medium format cameras and accessories.



METRIC MM-KG-C°



INTERNAL DIMENSIONS

L LENGTH	480 mm
W WIDTH	370 mm
D DEPTH	205 mm
LID	50 mm
BASE	155 mm

EXTERNAL DIMENSIONS

L LENGTH	520 mm
W WIDTH	435 mm
D DEPTH	230 mm

OTHER DATA

WEIGHT EMPTY	4,64 Kg
WEIGHT WITH FOAM	5,40 Kg
WEIGHT WITH CUSTOM FOAM	Kg
VOLUME	36 lt
BUOYANCY	24,70 Kg/max
OPERATING TEMPERATURE	°C min +90 / max -33

IMPERIAL IN-LBS-F°



INTERNAL DIMENSIONS

L LENGTH	18 7/8 in
W WIDTH	14 9/16 in
D DEPTH	8 1/16 in
LID	1 15/16 in
BASE	6 1/8 in

EXTERNAL DIMENSIONS

L LENGTH	20 1/2 in
W WIDTH	17 1/8 in
D DEPTH	9 1/16 in

OTHER DATA

WEIGHT EMPTY	10.22 lbs
WEIGHT WITH FOAM	11.90 lbs
WEIGHT WITH CUSTOM FOAM	lbs
VOLUME	9.24 gal
BUOYANCY	54.45 lbs/max
OPERATING TEMPERATURE	°F min +194 / max -27.4

FEATURES



CORROSION PROOF METAL HINGES WITH LID STAY FEATURES



FIXING POINTS

Additional fixing points on the lid, available on certain models



INTERNAL SLOTS

Internal slots for optional panel mounting brackets or panel mounting rings



JAM FREE LATCHES WITH EASY-OPENING MECHANISM

(from model 3818 on)



SEALING O-RING

(Art. NEOSEAL + nr. art.)



MANUAL PRESSURE RELEASE VALVE

The internal stop ring prevents valve from being completely extracted (Art. PURGEVALVE.B)



PVC WATERPROOF I. D. REMOVABLE LABEL

(Art. LABELCOVER + nr. art.)



SOFT GRIP RUBBER HANDLE

Load tested handle, reinforced with corrosion proof steel pins

ACCESSORIES



PADDED BAG WITH ADJUSTABLE DIVIDERS

BAG-F

Highly durable padded bag with rubber coated handle and waterproof zipper with lockable Velcro pull zipper. Practical external front pouch for documents, removable shoulder strap and rubber feet on the bottom to grant better grip. Internal adjustable padded dividers for flexible configuration. Ideal to protect sensitive equipment (ie electronic, photographic, broadcasting, medical etc.). Suitable for case 4820. Color: black/red.



SPLITTABLE PADDED PC AND DIVIDERS BAG

BAG-PC48

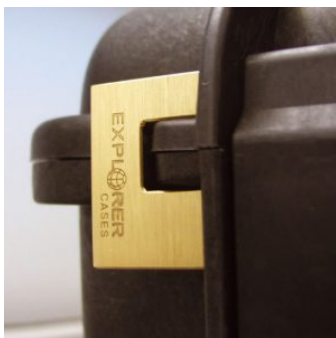
Highly durable, splittable padded bag with rubber coated double handle and waterproof zippers with lockable Velcro pull zipper. Practical external front pouch for documents, removable shoulder strap and rubber feet on the bottom to grant better grip. Ideal for both laptop (up to 17") and photographic equipment (internal adjustable padded dividers for flexible configuration). Provided with two internal cable pouches. Suitable for case 4820. Color: black/red.



LID PANEL WITH ORGANIZED POUCHES

PANEXPL48

Practical and robust lid panel with pouches, ideal for small accessories and documents. Suitable for case 4820. Color: black.



PATENTED HEAVY DUTY BRASS PADLOCK WITH KEYS

EXPL PADLOCK

Designed to fit snug to the Explorer case mould so as not to swing out



PATENTED COMBINATION PADLOCK

EXPL COMBILOCK

Designed to fit snug to the Explorer case mould so as not to swing out



HANDY BACKPACK CARRYING SYSTEM FOR CASES

BACKPACK L

Made of robust tear resistant polyester. Designed with adjustable and comfortable padded shoulder straps and belt. Provided with an external pocket for small accessories, with Velcro strap. Ideal wherever a free hand movement is required, like in outdoor activities, extreme sports, emergency, rescue, trekking, industrial field, etc. Suitable for models 3317W, 4412, 4419 and 4820. Color: black.



BLIND INSERT

KIT.EXPL.PLUGS

Kit includes 6 pcs. Whenever the slots are not going to be used for in-built applications, those can be closed by blind inserts that will give the case a better and finished interior look.



TSA APPROVED PADLOCK WITH COMBINATION

EXPL TSA.DIGILOCK

The new TSA approved padlocks allow tsa® airport security agents to open the case without destroying the lock. TSA agents are trained to recognize the travel sentry certified logo and should not break the case lock.



METAL BRACKET - KIT SUPP. EXPL

KIT SUPP.EXPL.

KIT SUPP. EXPL - Kit includes 6 pcs. All models (except for the 1908) are internally equipped with specific slots, to apply the optional metal or plastic brackets which provide either a panel's fixing points or a fix mechanical joint inside the case, to build more complete applications. This way the case becomes a real workstation, rather than just a carrying container. As the panel mounting brackets are mechanically fixed by screws, they can be removed when necessary. The dedicated screws allow the case to remain waterproof, and help the panels to be removed easily and quickly



PLASTIC BRACKET

KIT SUPP.PLAST.

Kit includes 6 pcs. All models (except for the 1908) are internally equipped with specific slots, to apply the optional metal or plastic brackets which provide either a panel's fixing points or a fix mechanical joint inside the case, to build more complete applications. This way the case becomes a real workstation, rather than just a carrying container. As the panel mounting brackets are mechanically fixed by screws, they can be removed when necessary. The dedicated screws allow the case to remain waterproof, and help the panels to be removed easily and quickly



PANEL RING FOR CASE 4820

PANRING48

Includes Metric system fixing screws. User friendly panel frames, they can be used to fix several kind of panels, from plastic to aluminum ones. Equipped with an additional gasket (which will be squeezed in between the panel and the frame) they can provide the case with a perfect instrumentation surface and a further humidity and dust resistance when the case is used in the field. Completely removable, resistant and light, these panel rings help to transform the Explorer cases into practical workstations.



CONVOLUTED FOAM SET FOR CASE 4820

LIDFOAM.48

(includes 2 pcs.)



FOAM SET FOR CASE 4820

FOAM.4820

Layers of pre cubed foam for the bottom and convoluted foam for the lid. The pre-cubed foam allows the user to tailor the insert to their own individual requirement. The convoluted foam in the lid helps to firmly keep the stored equipment when the case is closed. Available for 4820 model. Color: dark grey. [DOWNLOAD PDF](#)



PANEL RING FOR CASE 4820

PANRING48.USA

Includes Imperial system fixing screws. User friendly panel frames, they can be used to fix several kind of panels, from plastic to aluminum ones. Equipped with an additional gasket (which will be squeezed in between the panel and the frame) they can provide the case with a perfect instrumentation surface and a further humidity and dust resistance when the case is used in the field. Completely removable, resistant and light, these panel rings help to transform the Explorer cases into practical workstations.

SPARE PARTS



Metal clips for mod.

**3005-4209-16-4412-19-4820-5140-5218-21-5325-26-5822-23-33-762
6-30-35-41-7726-45-7814-9413-33-10826-40-11413-13513-27-15416**

KIN.1214

Includes: 4 metal reinforcements



KIN.0969

Transparent PC name tag for mod.

**4209-4216-4412-4419-4820-5218-5221-5325-5326-5822-5823-5833-
7626-7630-7635-7641-7726-7745-7814-9413-9433-10826-10840-114
13-13513-13527-15416-MUB65**

KIN.0969

Includes: 1 transparent name tag holder



KIN.0542

Rubber coated handle for models 4820-5325-5326-5822-5823-5833

KIN.0542

Includes: 1 black handle 2 fixing pins



KIN.0446

Easy-opening latch for models from 3818 up

KIN.0446

Includes:

1 black latch

1 fixing pin



Polyurethane o-ring seal for model 4820

KIN.0851

Includes:
1 o-ring



Manual pressure release valve for models from 2712 up (except mod. 3005)

KIN.0495

Includes: 1 black purge valve (+ o-ring + pin) 1 threaded bush 1 snap ring (Seeger)