



Characteristics

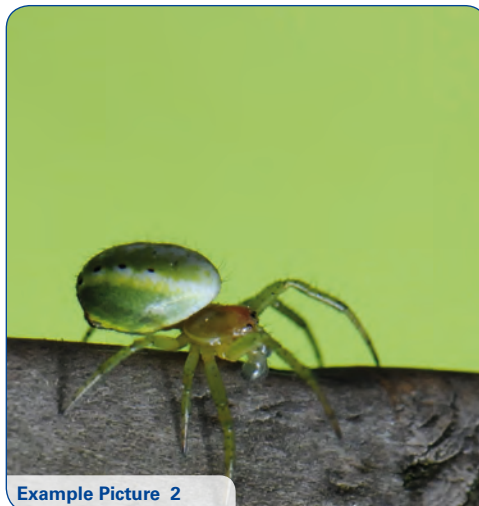
80 LEDs ensure permanent and even illumination for all macro and close-up shots. The additional flash provides even more light and improves the depth of field (1 f-stop).

- Well suited for all DSLRs and digicams with filter mount
- Color temperature: app. 5.500K- 6.500 K (daylight)
- Light intensity: 450 Lux/1m with 80 LEDs
- Power source: 4xAA 1,5V batteries or rechargeable NiCd/NiMH batteries
- Recommended distance to the object: 3 to 100 cm
- Mounts to lens filter thread 52, 55, 58, 62, 67 und 72mm (stepping rings included)
- Measurements: control unit: 93x67x67mm, ring light: 142x119x28mm
- Weight: app. 260g (w/o batteries)

Item No	EAN13	MSRP €
371080	4000461066320	169,00



Example Picture 1



Example Picture 2



Example Picture 3